

Project Engine

power to the project

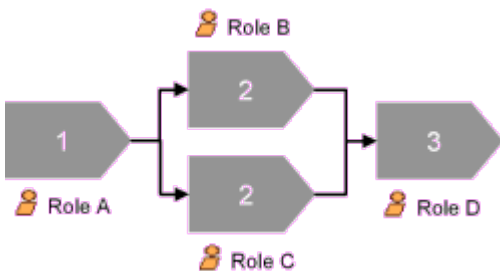


Project Engine

Project Engine is a complete project management and task tracking system that can be used for a wide range of projects. It is designed for anyone involved in the project including management, customers and the project team.

A reliable, scalable and secure solution for:

- managing tasks and assignments
- handling personal or public to-do lists
- project planning and tracking
- workflow/process management
- managing requirements and risks
- tracking defects and change requests
- executing step-by-step test cases
- scheduling events
- instant messaging/discussions
- supporting ITIL processes
- version control with traceability to tasks



Work from Anywhere

Access your tasks from any place. Project Engine has a full range of clients to be able to work with your tasks from any location.

Work from:

- **Your office** using the Project Engine client. The client application supports the widest range of functionality and may also be used for managing users and creating project templates.
- **Any computer** using the Project Engine web interface. The web interface can be used for most task operations. It is designed to be extremely user friendly and it is targeted for beginners to normal users.
- **Anywhere** using the Project Engine mobile client. Use your cell phone to view, start and complete tasks. Like the web interface, the mobile client is designed to be very easy to use. There is also an interface for XHTML enabled cell phones.

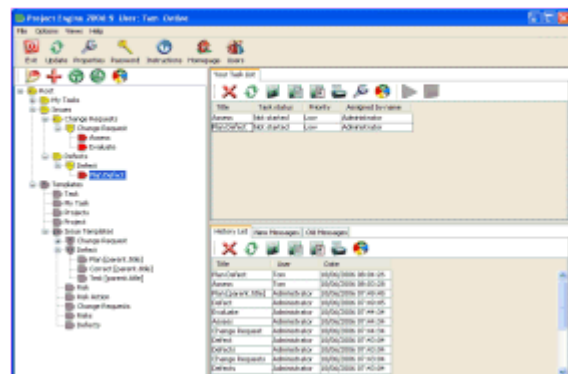
Increase Productivity

Project Engine will dramatically increase the productivity in your project by supporting all project members in all stages of the project life-cycle. Project Engine can be used for project planning and tracking work down to the smallest activity.

Not found a sufficient tool for your project yet?

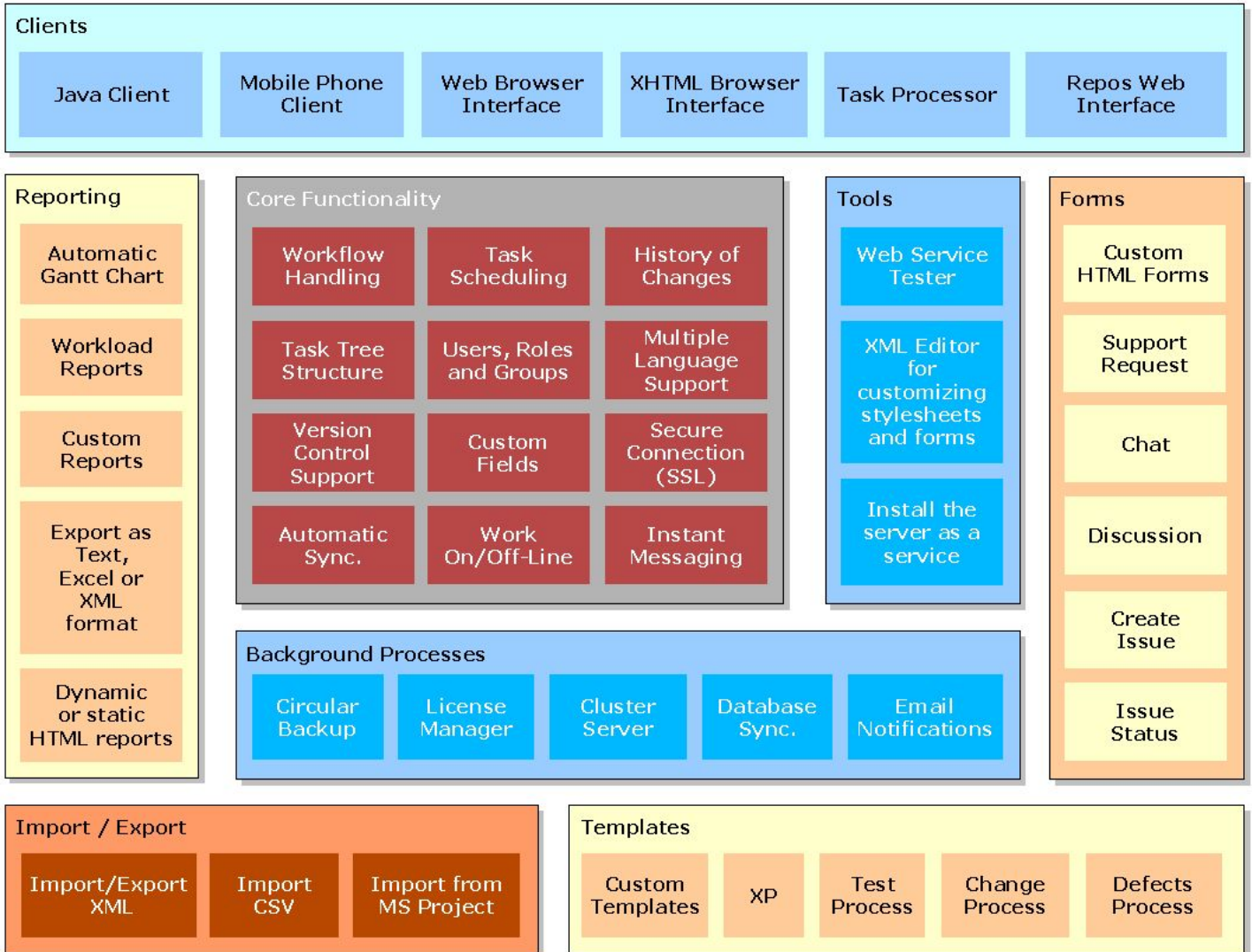
You are not alone, many project tools are complicated, requires too much work or does not work in practice. Fear not, Project Engine will take care of most of the common problems found in projects today like:

- Lack of user involvement
- Communication problems
- Unclear roles and responsibilities
- Lacking requirements
- Unclear objectives
- Changing requirements and specifications
- Poor cost and schedule estimation
- Failure to plan
- Late failure warning signals
- Incomplete testing



Feature Overview

The figure below shows the main features of the Project Engine system.



Version Control with Traceability



The built-in Subversion client takes version control to the people. Version control is no longer a complicated and time consuming task. The Project Engine version control interface requires no training and adds virtually no overhead to the workload of the team.

The dream of traceability between tasks/activities and files is now a reality since all changes to files in the repository will be linked to tasks in Project Engine.

Instant Messaging

To improve the communication even further, Project Engine contains its own instant messaging/discussion client. Send an instant message to any number of users, roles or groups.

A discussion can be continued by any user at any time. All discussions are stored in the Old Messages list.

Personal or Public To-Do Lists

All users have their own to-do list. The main goal for each team member is to complete the tasks in the to-do list. The to-do list only contains the activities that needs to be performed next, not all the tasks in the system assigned to a user, since tasks can be delayed or arranged in order of completion.

Project Planning and Tracking

Planning activities several months ahead is possible since tasks can be arranged in sequences and have other dependencies. This eliminates the need for creating Gantt Charts that, instead of being very hard to keep up-to-date, are simply generated from the hierarchy of tasks and the work schedule of each user.

Supporting ITIL Processes

Project Engine is the ideal tool for supporting ITIL processes. The system can drive anything from simple defect- or change-processes to complex workflows supporting an enterprise organization.